

# BRIARGROVE ADDITION

THIRD INSTALLMENT

BRYAN, TEXAS

DECEMBER, 1965

J. SKRIVANEK  
OWNER-DEVELOPER

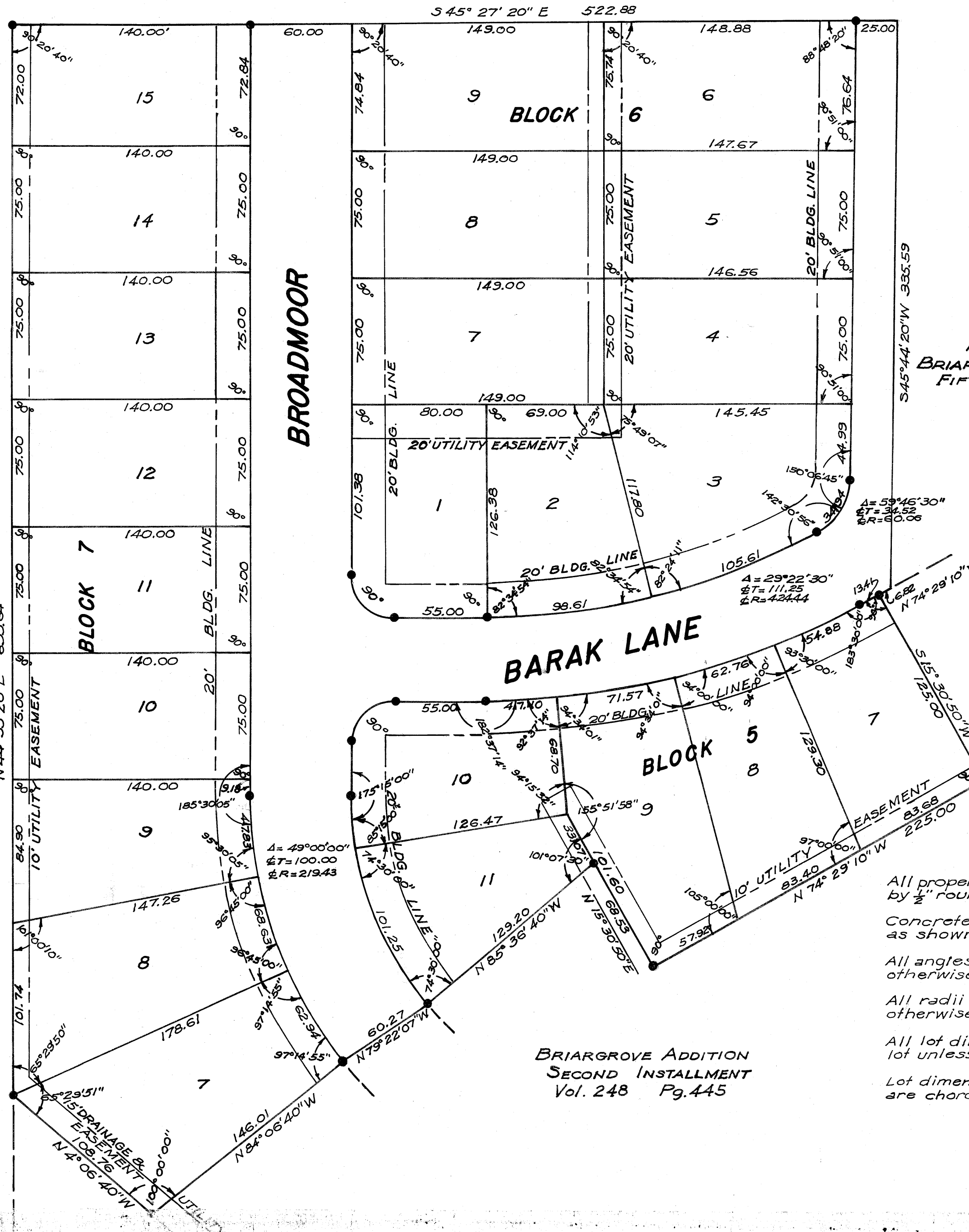
SCALE: 1" = 50'

JOE ORR, INC.  
SURVEYOR-ENGINEER

D.R.: VOL. 252, PG. 109

on land base  
4/17/65  
WD

WOODSON TERRACE  
NUMBER ONE  
Vol. 247 Pg. 600  
N 44° 53' 20" E 633.64



PROPOSED  
BRIARGROVE ADDITION  
FIFTH INSTALLMENT

### NOTE

- All property corners are marked by 1/2" round iron rods.
- Concrete monuments are placed as shown by ●.
- All angles are 90° unless otherwise noted.
- All radii are 25' unless otherwise noted.
- All lot dimensions same as adjoining lot unless otherwise noted.
- Lot dimensions along curves are chord distances.

BRIARGROVE ADDITION  
SECOND INSTALLMENT  
Vol. 248 Pg. 445